

**Byers Gill Solar
EN010139**

6.4.8.1 Environmental Statement

Appendix 8.1 Historic Environment Desk Based Assessment (HEDBA)

Figures 75-95

Part 2 of 2

Planning Act 2008

APFP Regulation 5(2)(q)

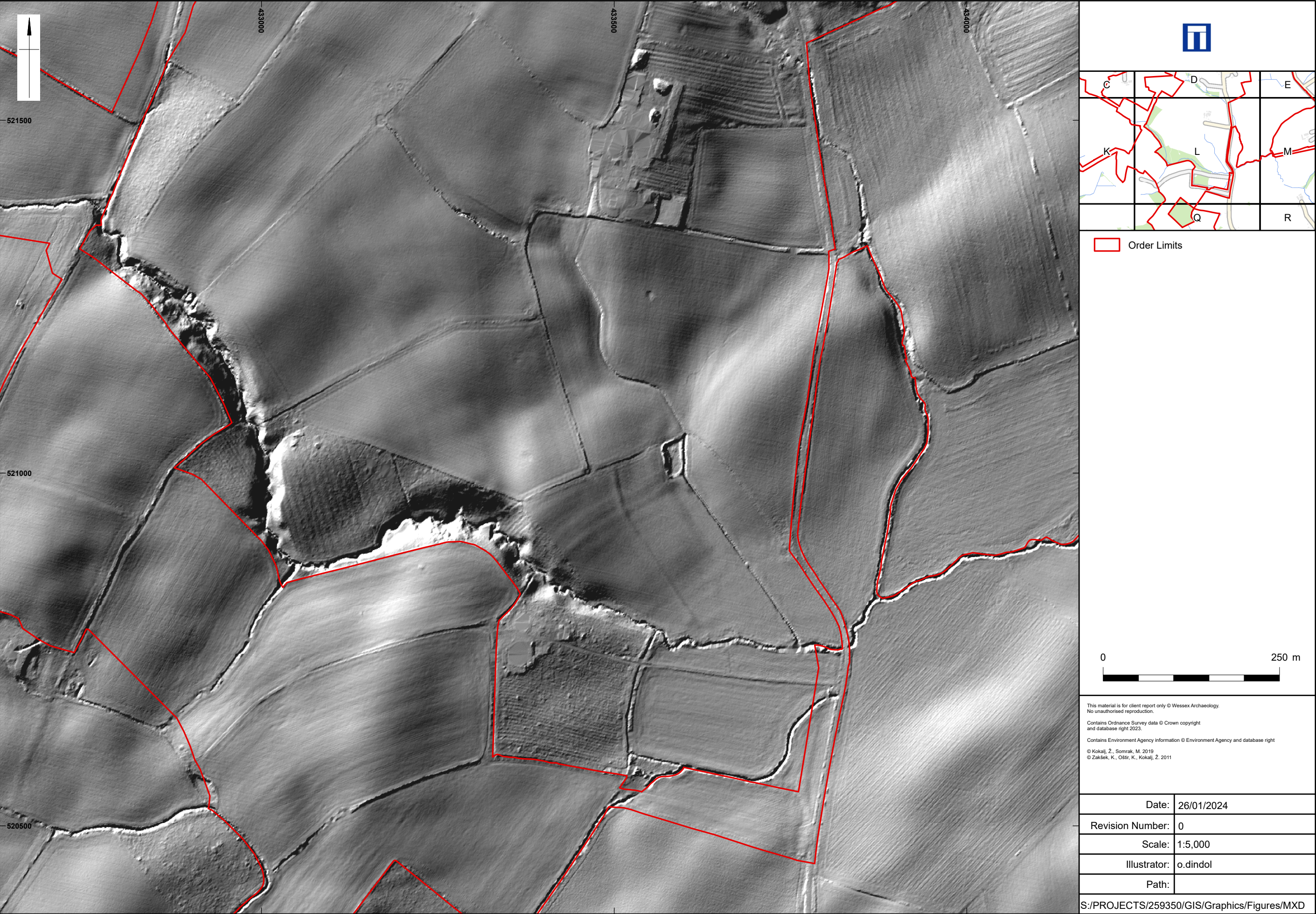
Infrastructure Planning (Applications: Prescribed Forms
and Procedure) Regulations 2009

Volume 6

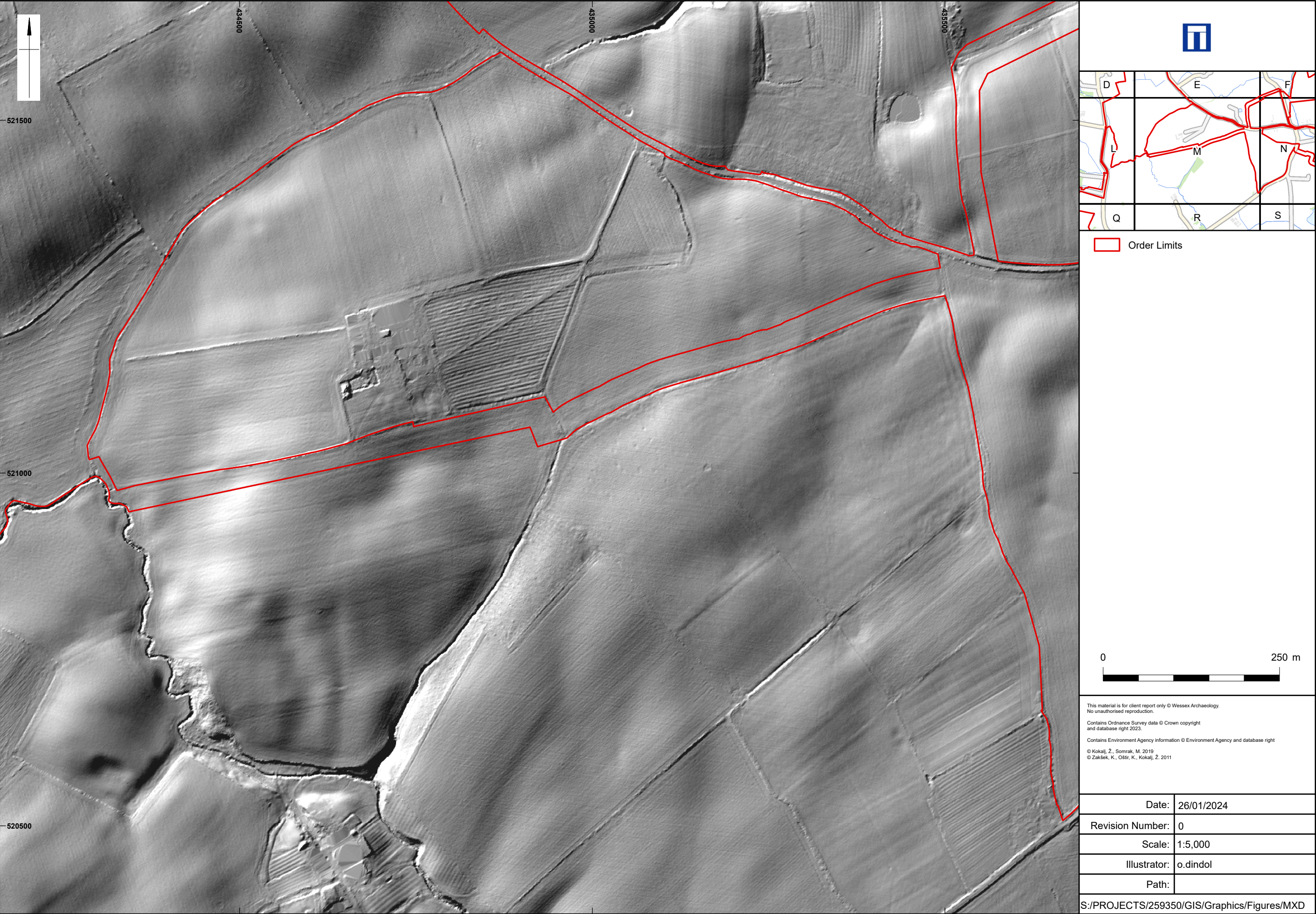
February 2024

Revision C01





Site, location and Analytical hillshade (Illumination angle 315°) derived from input spatial resolution of 1m DTM (Sheet L)



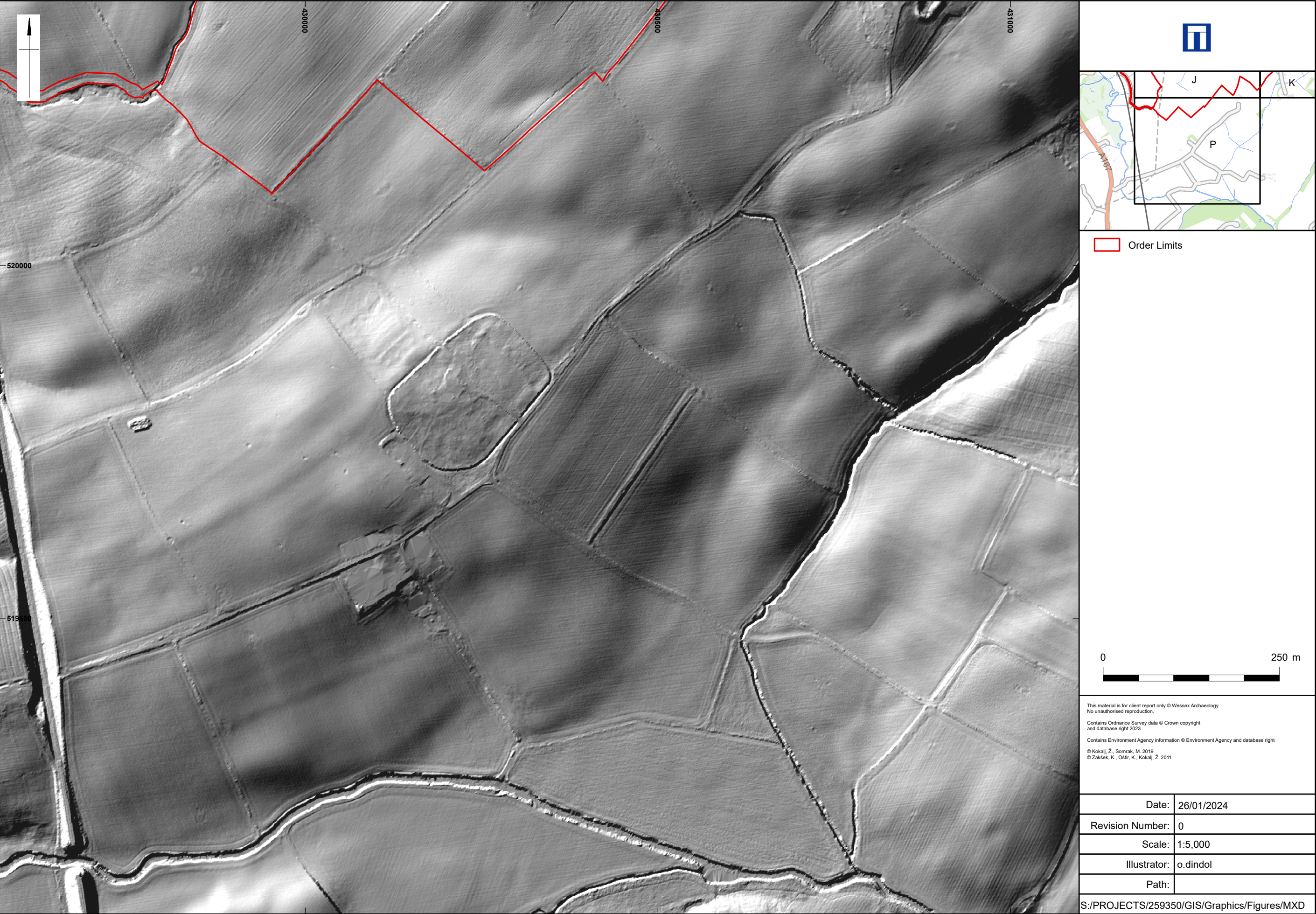
Site, location and Analytical hillshade (Illumination angle 315°) derived from input spatial resolution of 1m DTM (Sheet M)



Site, location and Analytical hillshade (Illumination angle 315°) derived from input spatial resolution of 1m DTM (Sheet N)

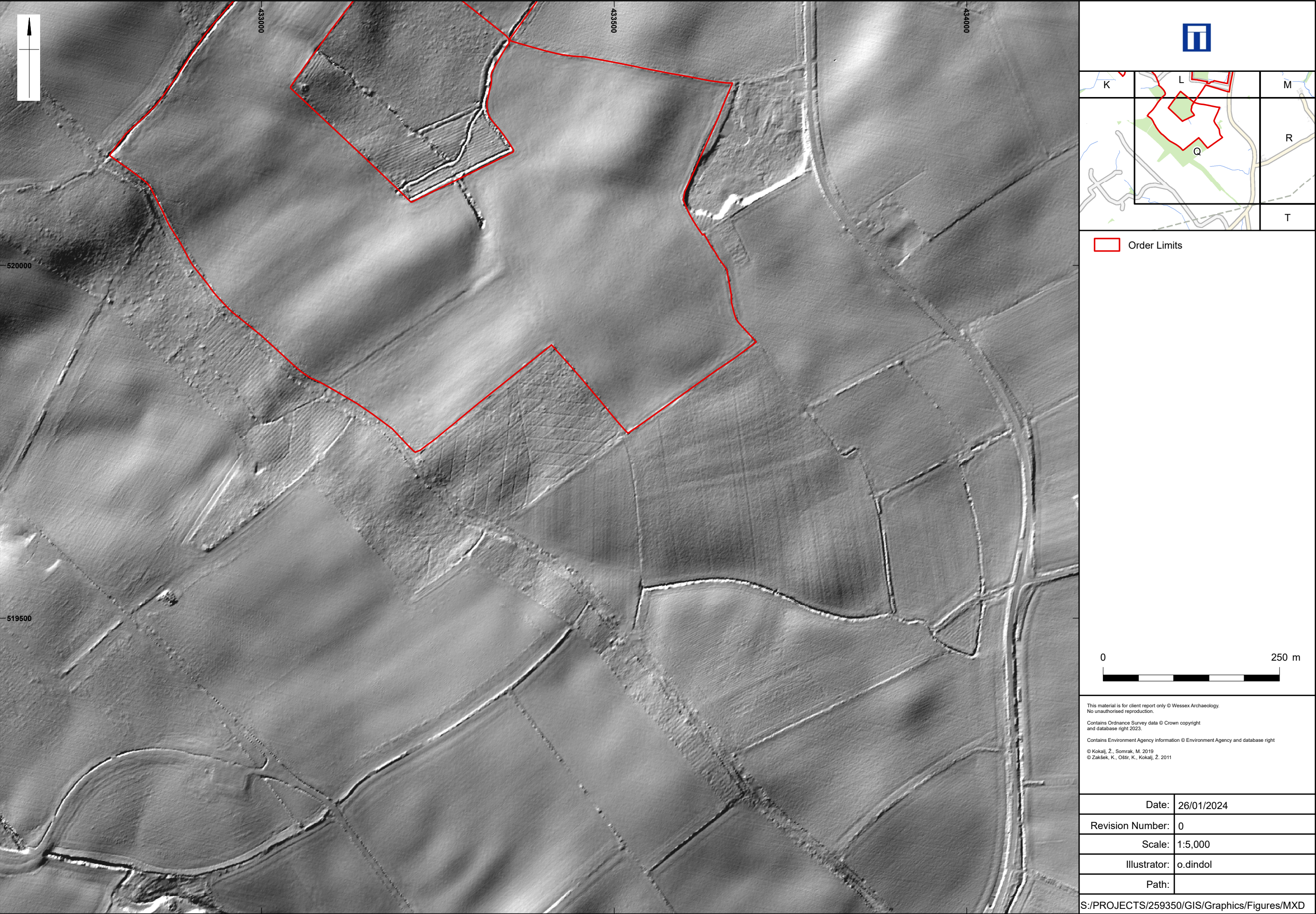


Site, location and Analytical hillshade (Illumination angle 315°) derived from input spatial resolution of 1m DTM (Sheet O)

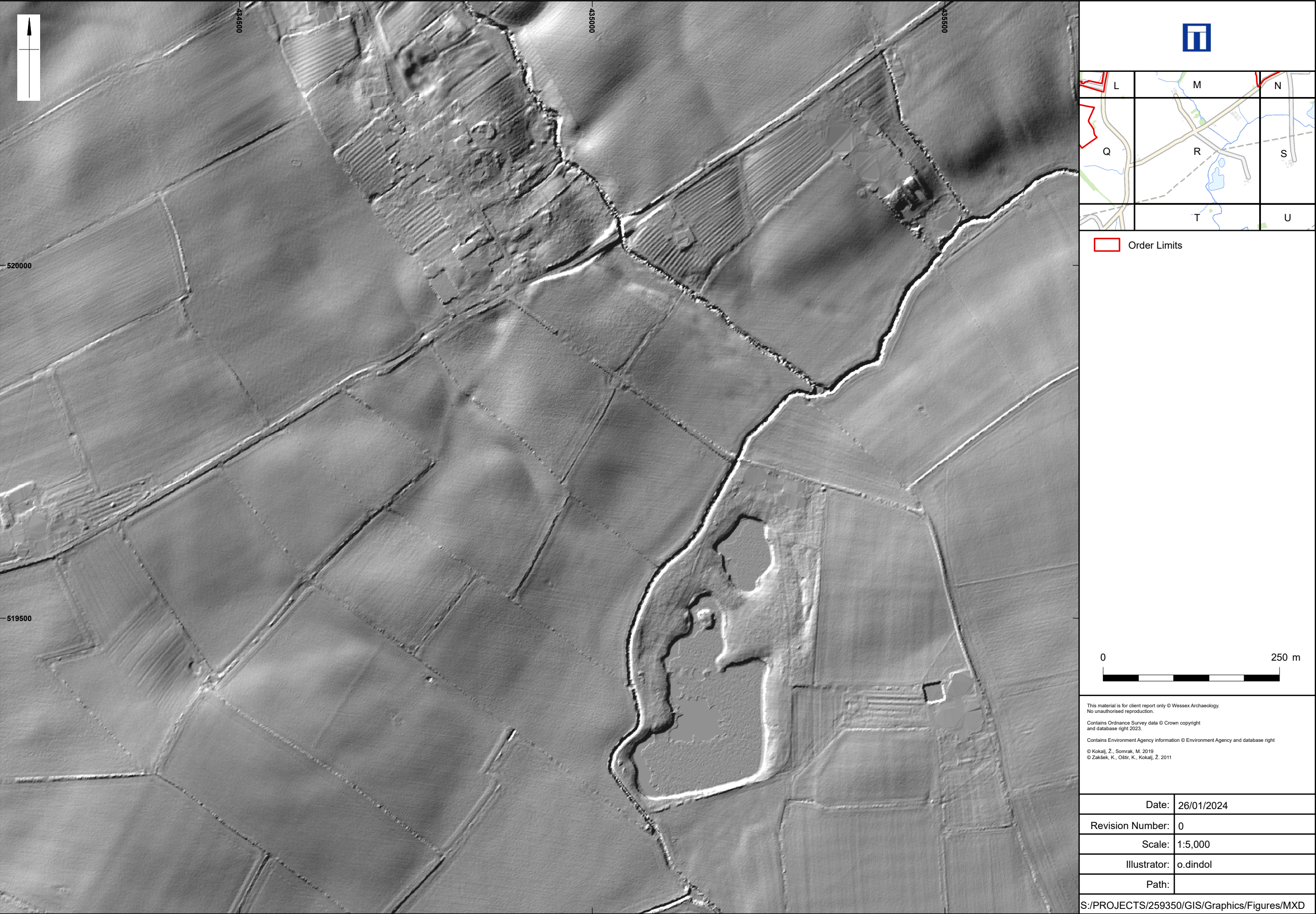


Site, location and Analytical hillshade (Illumination angle 315°) derived from input spatial resolution of 1m DTM (Sheet P)

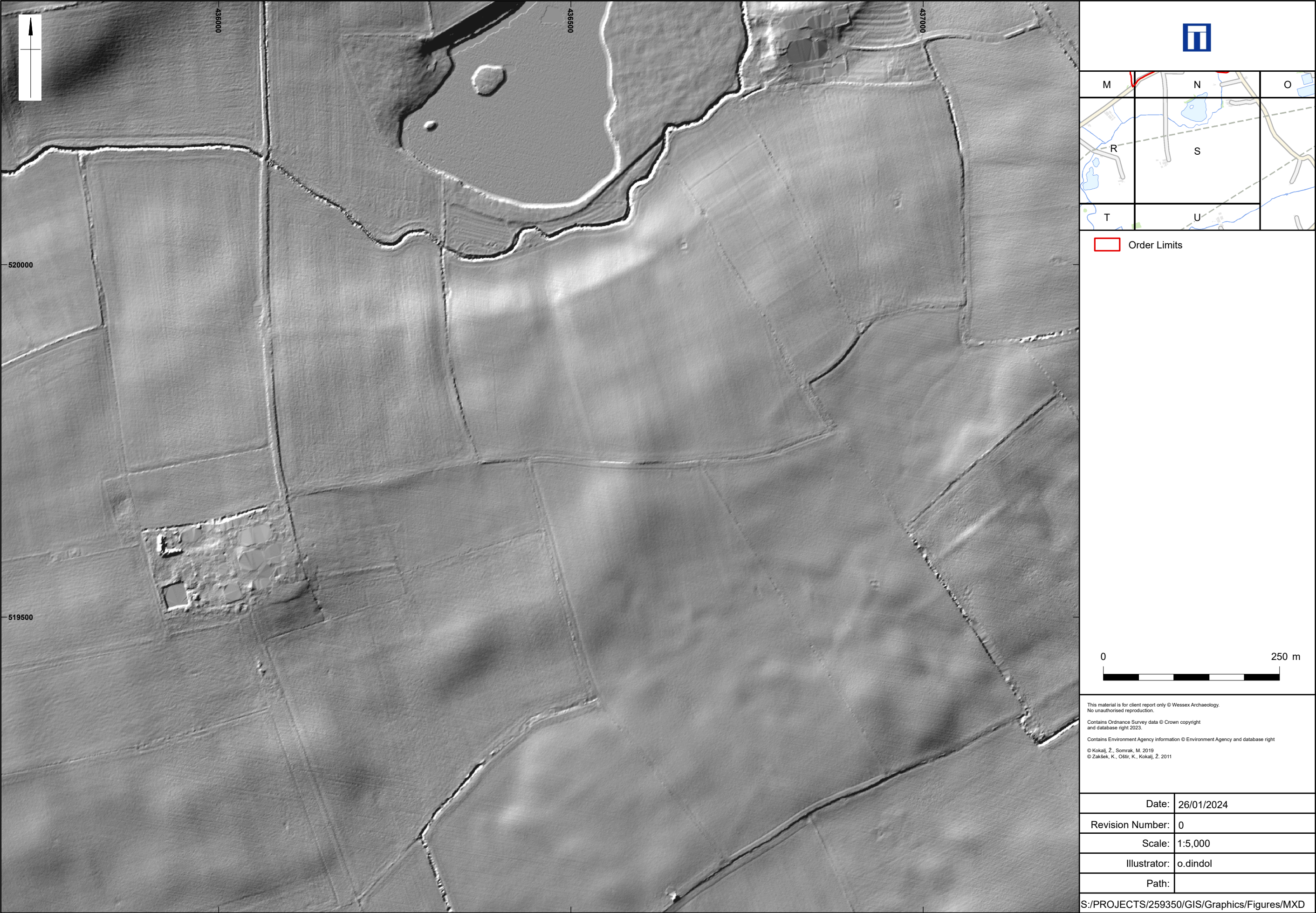
Figure 90



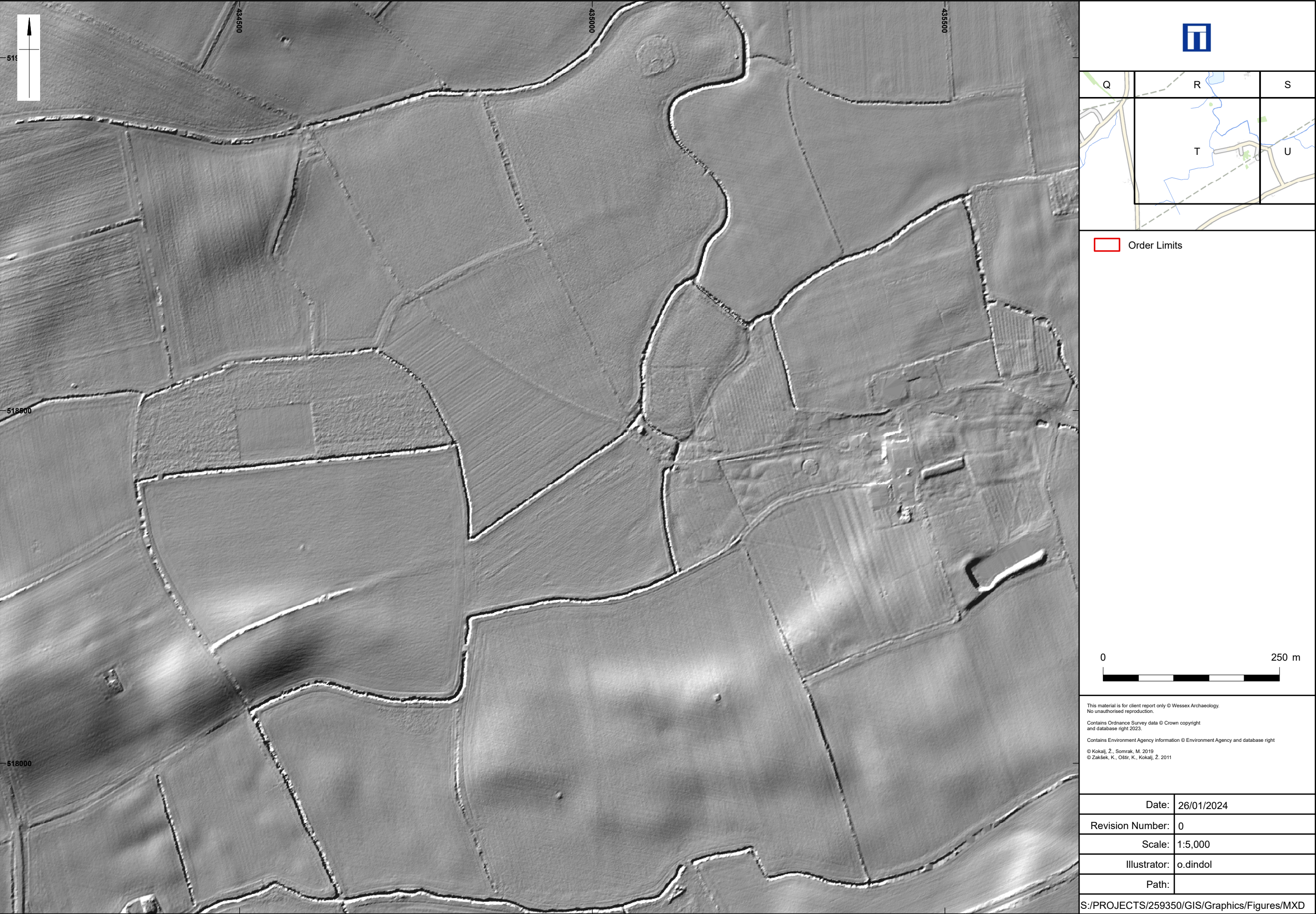
Site, location and Analytical hillshade (Illumination angle 315°) derived from input spatial resolution of 1m DTM (Sheet Q)



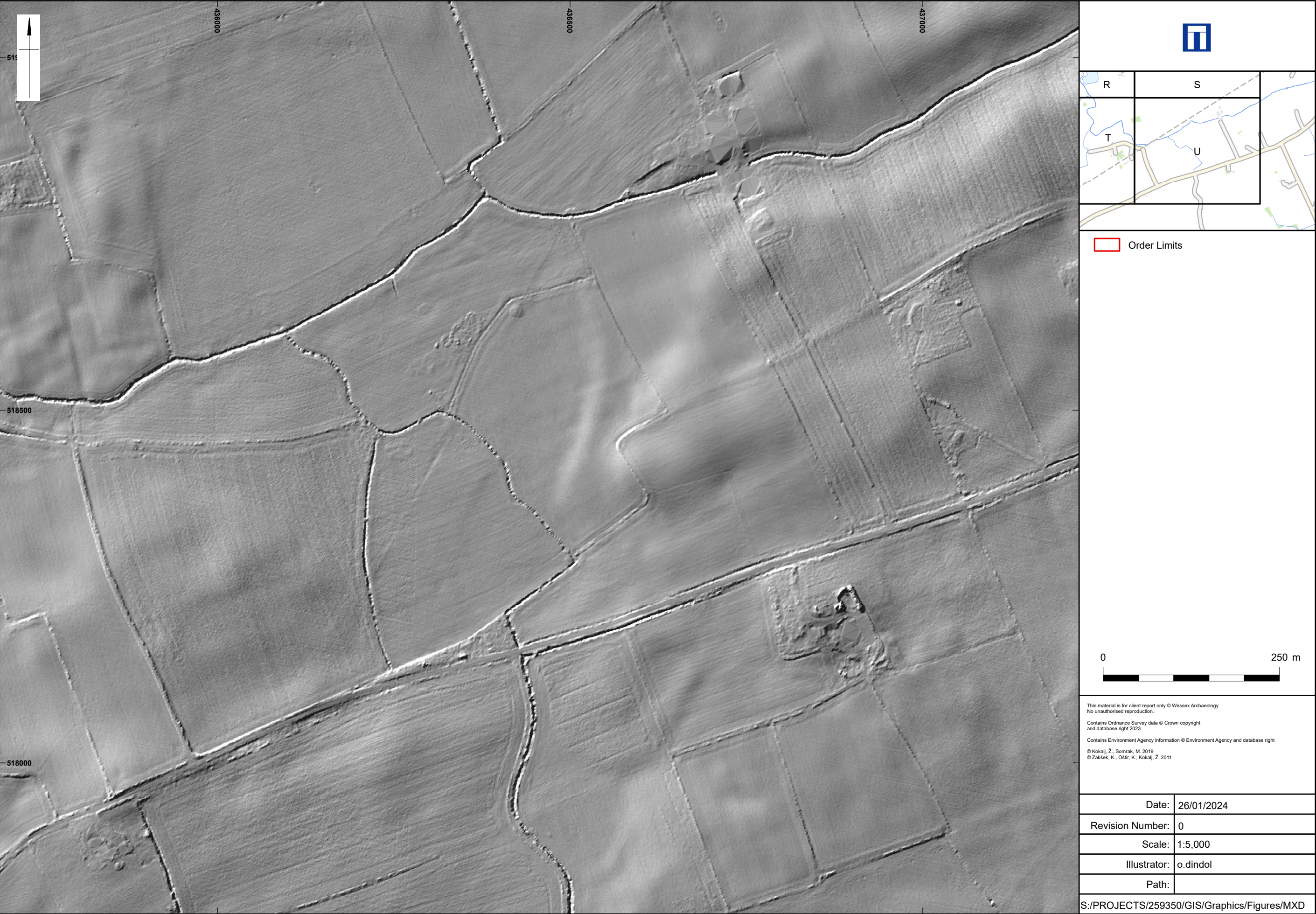
Site, location and Analytical hillshade (Illumination angle 315°) derived from input spatial resolution of 1m DTM (Sheet R)



Site, location and Analytical hillshade (Illumination angle 315°) derived from input spatial resolution of 1m DTM (Sheet S)



Site, location and Analytical hillshade (Illumination angle 315°) derived from input spatial resolution of 1m DTM (Sheet T)



Site, location and Analytical hillshade (Illumination angle 315°) derived from input spatial resolution of 1m DTM (Sheet U)